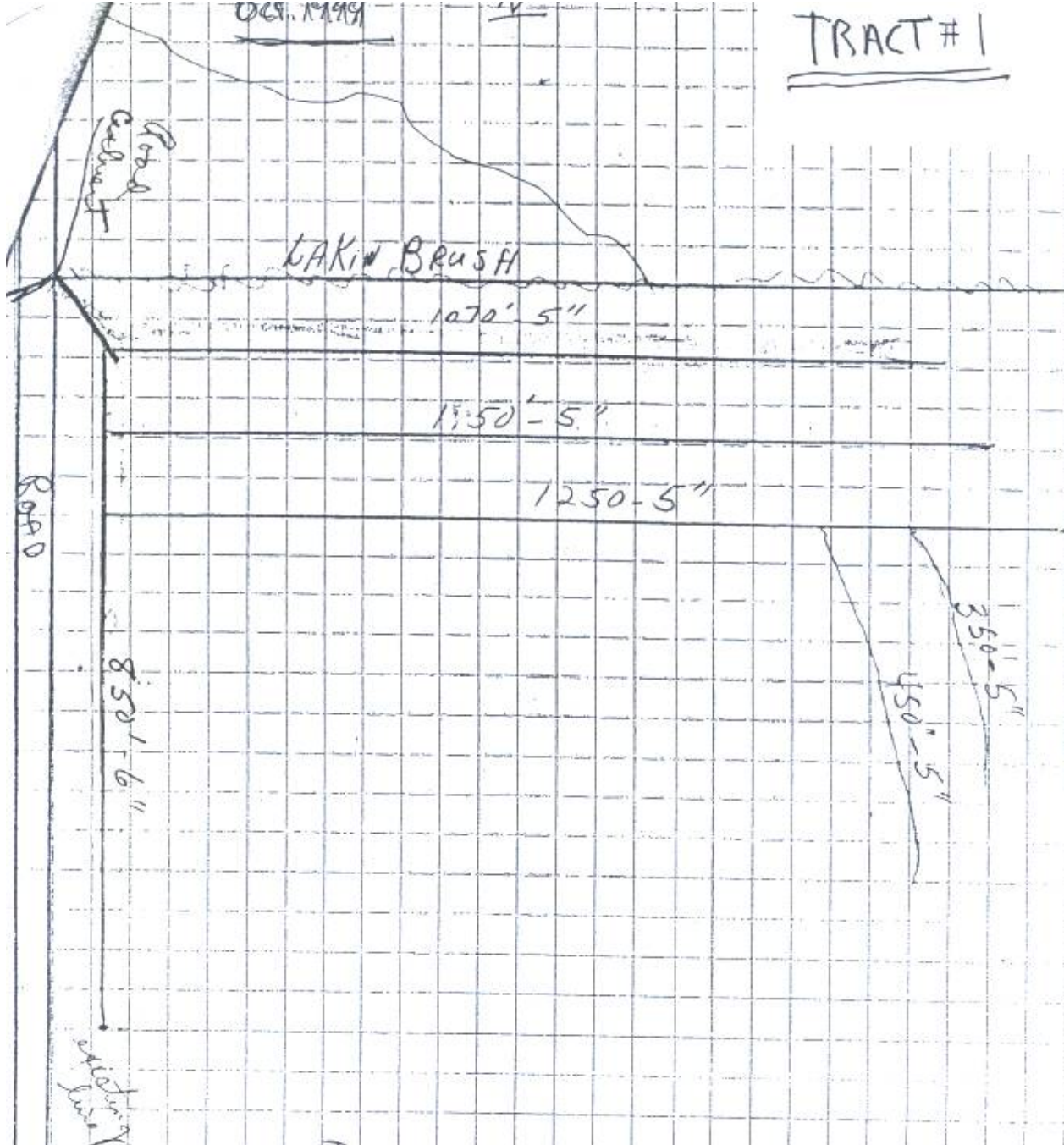


TRACT # 1

025. 1999

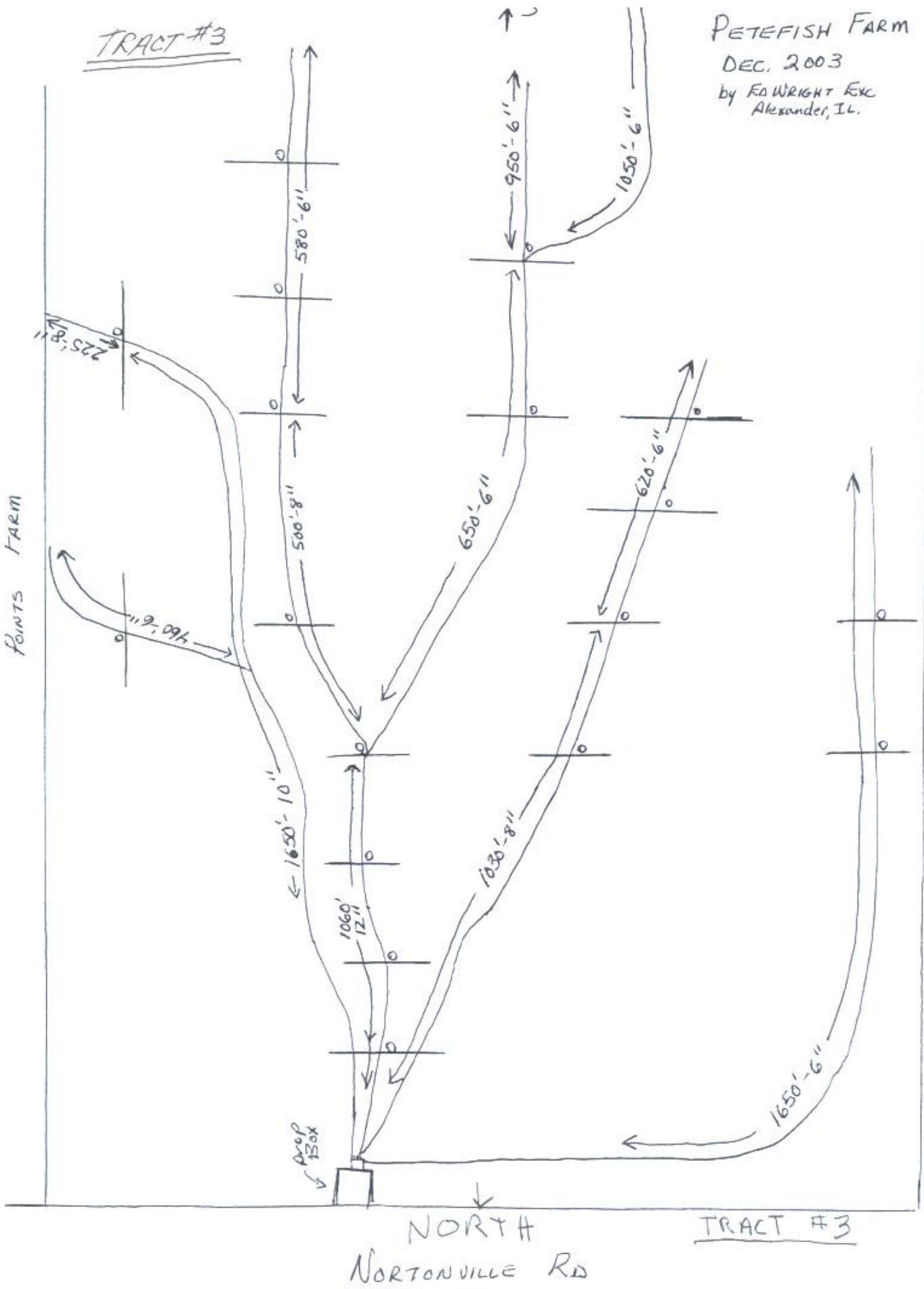


- 850' 6"
- 4270' 5"
- 13' 6" SOR
- 1 - 6" Belgarda
- 5 - 6x5 Tables
- 1 - 6x4 Table
- Building exterior 4 1/2" Dia.

TRACT #3

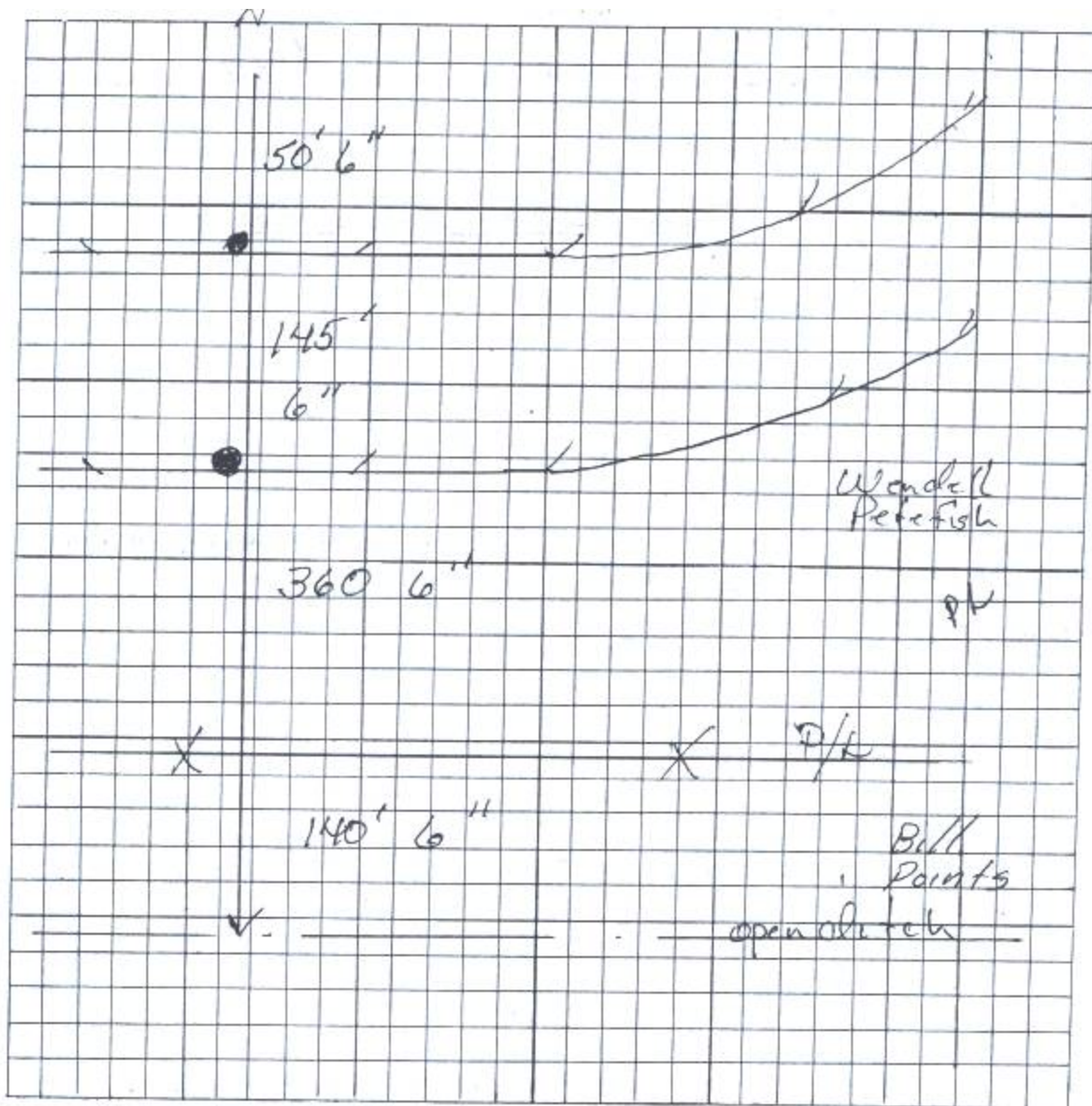
PETEFISH FARM  
DEC. 2003  
by F. WRIGHT EXC  
Alexander, IL.

FOUNTS FARM







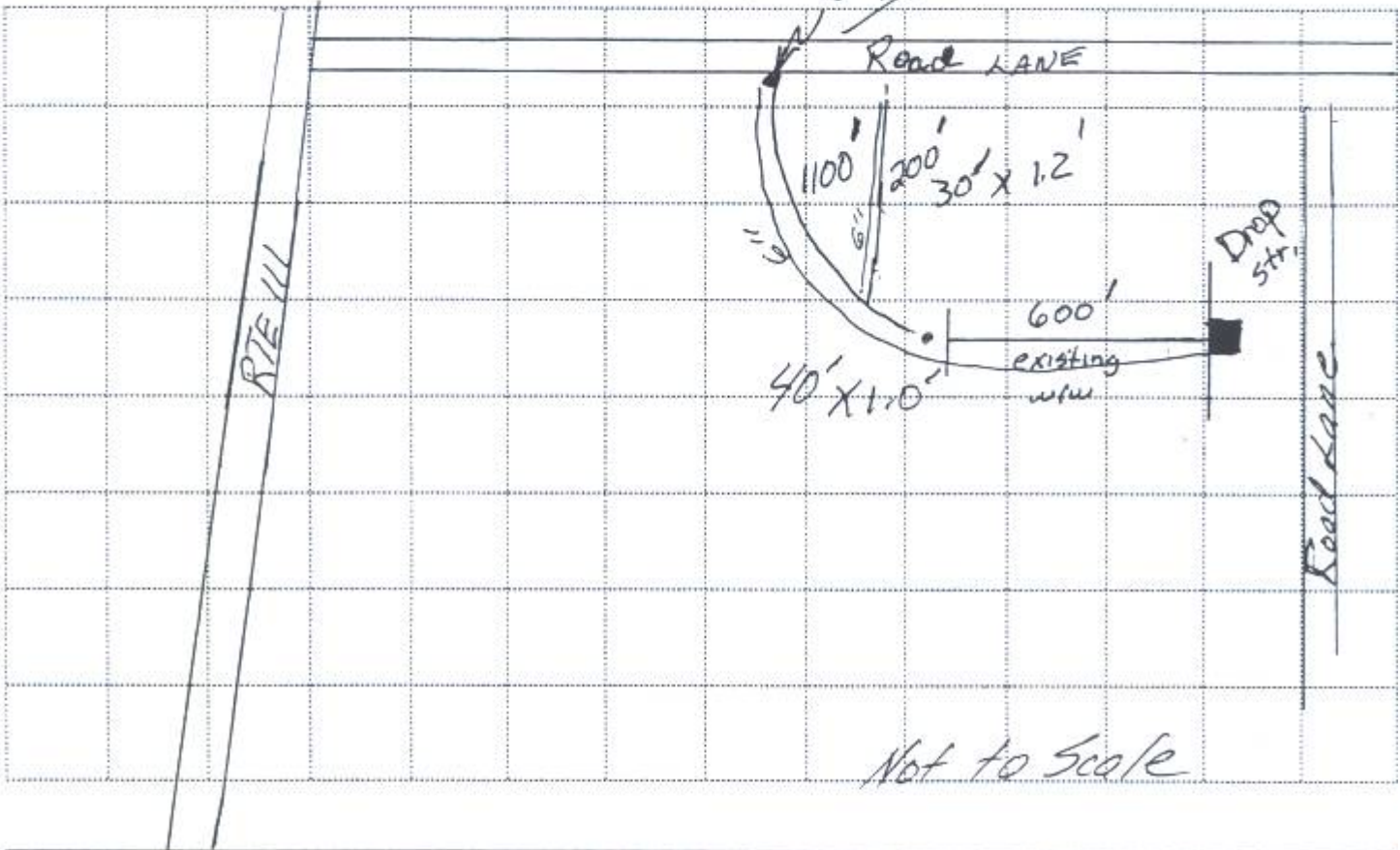




# Grassed Waterway/Vegetated Filter System – Job Sketch

If needed, an aerial view or a side view of the grassed waterway/vegetated filter system can be shown below. Other relevant information, such as complementary practices, and adjacent field or tract conditions including structures and crop types, and additional specifications may be included.

Scale 1"= \_\_\_\_\_ ft. (NA indicates sketch not to scale: grid size=1/2" by 1/2")



Additional Specifications and Notes:	
1- 6" Inlet	\$ 150
1900' 6" Tile	2280
20' outlet Pipe 6"	90
Site Prep 200	200
1.7 ac w/w @ 1200	2040
	\$ 4750.00

The United States Department of Agriculture (USDA) prohibits discrimination in its programs on the basis of race, color, national origin, sex, religion, age, disability, political beliefs and marital or familial status. (Not all prohibited bases apply to all programs.) Persons with disabilities who require alternative means for communication program information (Braille, large print, audiotape, etc.) should contact the USDA Office of Communications (202) 720-2791.

To file a complaint, write the Secretary of Agriculture, U.S. Department of Agriculture, Washington, D.C., 20250, or call 1-800-245-6340 (voice) or

